



Waddesdon C of E School | Parent Newsletter – November, 2023

Keeping You Connected

Thank you for your feedback from last month's survey. 275 of you (just over one quarter of families) completed the Connectedness Survey.

Headlines included: 95% of you indicating that your child is happy at Waddesdon and 97% of you saying you would recommend the school to other parents.

2. I feel connected to the school community

Very much so	49
Mostly	131
A little	72
Not really	16
Not all	7



On the whole respondents were happy with the way that we deal with issues raised, but some parents would like us to do more. As you can see from the graphic above, most families feel connected to the school community. Hopefully, this newsletter will continue to provide you with more information about what is going on, and ways we can connect with you more regularly.

I have have read all comments which were given and, where you left your name, I or another member of staff will follow up with you.

Mr Abbott

Charity Champions

Thank you for sending in items during Charity Week. On Friday, 20th October, the students organised a non-uniform day as part of Breast Cancer Awareness month. The school community raised a magnificent £1,249.50.

We are still collecting other items to distribute to charities who support those in need. You'll find a complete list of items in the newsletter on our [letters home](#) section of our website.



Attendance Matters

In your child's first report for this year, you will see their attendance percentage so far.

We know that students who don't attend school fall significantly behind their peers; the data for future outcomes of students who are persistently absent makes for serious [reading](#).

In 2019 secondary school pupils who didn't achieve grade 9 to 4 in English and maths **missed 10 more days on average over the key stage** than those who achieved grade 9 to 5 in both English and maths.

Particular well done therefore to Year 7 and Year 12 for their attendance in the first half-term of this year. Attendance ratings for the first half-term were:

Year 7: Impressive

Year 8: Nearly There

Year 9: Good

Year 10: Nearly there

Year 11: Needs to improve

Year 12: Impressive

Year 13: Good

Please talk to us about how we can support any specific issues that you are facing at home.



In particular, if you are a parent of a Year 11 student who needs to improve their attendance, let us know how we can work in partnership with you.



What to do if you have symptoms of COVID-19

The NHS advises that people "stay at home and avoid contact with other people if you or your child have symptoms and either:

- have a high temperature (*38C or above*)
- do not feel well enough to go to work, school, childcare, or do your normal activities

You can go back to your normal activities when you feel better or do not have a high temperature. If your child has mild symptoms such as a runny nose, sore throat or mild cough, and they feel well enough, they can go to school or childcare."

"You are no longer required to do a COVID-19 rapid lateral flow test if you have symptoms. But if you or your child have tested positive for COVID-19:

- try to stay at home and avoid contact with other people for 3 days after the day the test was taken if you or your child are under 18 years old – children and young people tend to be infectious to other people for less time than adults
- try to stay at home and avoid contact with other people for 5 days after the day you took your test if you are 18 years old or over."

Sixth Form Open Evening – Thursday, 30th November



Sixth Form Open Evening

Students in Year 11 at Waddesdon, and at other schools, are all warmly invited to our Sixth Form Open Evening on Thursday, 30th November.

There will be an opportunity to meet teachers and students at our **Subject Fair from 6pm to 7pm**, followed by a **Presentation at 7pm** led by students, the Headteacher and the Head of Sixth Form.

Our Sixth Form Prospectus will be available on the school website from the date of the Open Evening, with full details about how to apply.

We look forward to seeing you there!

Support for Year 13 post-18 Applications

At our Life after Waddesdon evening, we provided information and guidance to support your son or daughter in their next steps in life. The link to this [comprehensive booklet](#) will enable you and your son, or daughter to make considered choices for the future.

If your child is in Years 10 or 11, you may be interested in seeing how they will be supported in our Sixth Form.

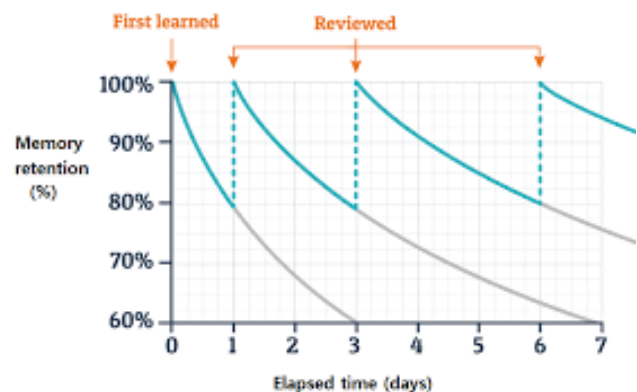


Revision and Long-term Memory

Very well done to our Year 10 students who have been sitting their Mock Exams in the first week of this half-term. Their attitude and approach to these practice exams has been impressive.

Whatever year group your son or daughter is in, a key aspect of successful learning is the practice of committing learning to our long-term memories. Ebbinghaus' forgetting curve shows the likely retention of learning over time.

The key is to return to information and to review understanding regularly.



Year 11 Mocks and Support

Year 11 Mock Exams run from Monday 4th to Tuesday 19th December. Students will receive their personalised timetables next week (w.b. 6th November) and should already have started their revision. The reports that were sent home before half term provide useful guidance on the areas where students should begin their focus.

As has been covered in their Successful Learning sessions from Year 9 onwards, students should follow the revision process outlined in the image shown here. This is an opportunity for them to consolidate what they have learned so far and showcase it in the exam format. It allows students to gain a clear idea of how they are progressing and the areas they need to focus on over the coming months.



Revision can be a stressful time for students and this week's Mock Exam Information Evening provided some strategies for parents supporting their children with this process. These included practical advice such as ensuring that they have a quiet space in which to work or making a revision timetable with them. But, perhaps more importantly, it highlighted the importance of positive encouragement throughout.

The powerpoint presentation will be emailed to all Year 11 parents.



Congratulations to last year's Year 11

The national progress measures have now been calculated nationwide, putting Waddesdon students in the **top 6% of all schools** in the country for progress, with a Progress 8 score of 0.78. Further information can be found on the [Compare School Performance Government website](#).



Reading for...success

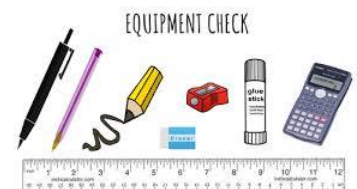
Research has repeatedly shown that young people who continue to read independently in their teenage years are more likely to do well in school. In fact, regular reading at the age of 15 is the single most important indicator of likely success in GCSEs and beyond.

To support your son or daughter our librarian, Miss Staiano, has put together a list of books which have been recommended by their subject teachers. You will find these on the [library section](#) of our school website.

Equipping your son or daughter for...success

Please can you continue to support your child by regularly checking that they have the equipment they need to access the school curriculum. If you are experiencing financial barriers to this, please let your Head of Year know.

Each day, your child should bring with them: their correct books for the day, pens (more than one), pencils (and sharpener), rubber, a highlighter, 15cm ruler, glue stick, scientific calculator, protractor, pair of compasses, plug-in headphones and tissues.





Support for Parents, Carers and Families

Attached to the email with this newsletter, our SENDCo, Mrs Champness, has shared two courses which may be of interest to some families. There is information on:

- Keeping your child in mind: a parenting support programme
- Walking Together: a parent-led group on issues relating to Mental Health



Consider yourself.... in for a treat!

Tickets for ***Oliver!*** are on sale on ParentPay, with four performances to choose from, including a matinee on Saturday, 18th November.

Tickets should be collected from the finance office **from Monday 13th November** at lunch or second break.

Doors open 6.30pm for evening shows, 3.00pm for Saturday matinée.

Waddesdon School Association (WSA) Christmas Raffle



This year we are holding a mini Christmas Fayre during the school production of ***Oliver!*** which takes place on Thursday 16th, Friday 17th and Saturday 18th November 2023.

The WSA will be running some fundraising stalls and will be selling raffle tickets prior to each of the performances. Refreshments will be on sale before each show and during the interval (please bring cash).

Raffle tickets will also be available to purchase on ParentPay and from the [school shop](#) until Wednesday 29th November, with the draw taking place on Friday 1st December 2023. Prizes will include luxury food, chocolate, drinks and beauty hampers.

For the Christmas Fayre and raffle to be a success in raising essential funds for the school, we are asking for donations including:

- **Food items and festive drinks for Christmas hampers**
- **New toys**
- **Gifts**
- **Leisure tickets/vouchers**
- **Toiletries**
- **Chocolates/sweets**
- **Tombola items**

Students may bring donations into school from now until Wednesday 29th November and **drop them off in the school Library.**

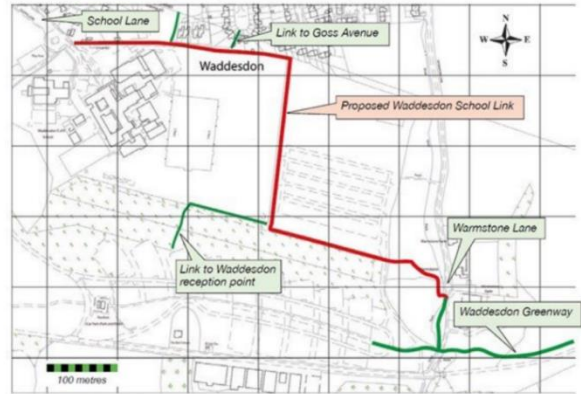
Thank you for your continued support – the WSA team.



The Waddesdon Greenway

The Greenway will be officially opened on Wednesday, 29th November.

To support this important event for our local community, the County's Active Travel team will be speaking to our students in assembly about healthy and environmentally mindful ways of travelling to school on Friday, 10th November.



Our [Travel Plan](#) encourages you to commit to doing **one of the three following things** to make the world and our local environment a better place:

- Walk, scoot or bike to school
- Use Waddesdon Manor's overflow carpark
- Consider using the five minute walking bubble when dropping off and picking up

These things will not only make the world a better place, but they will also contribute positively to your child's mental well-being.

Access to the Manor Overflow car park – 6th to 10th November



Please be advised that there will be no access to Waddesdon Manor's overflow carpark between 6th and 10th November. This is due to the installation and decoration of the Christmas trees on Silk Street.



Wednesday Late Bus

We encourage our students to take advantage of our late bus so that they can take part in extra-curricular activities (see [website.](#)) and also if they need to catch up on, or complete work.

The routes are outlined below:

Route 1: Westcott, Ashendon, Upper Winchendon, Quainton (The Green), Pitchcott, Oving (Bowling Alley), North Marston (Pilgrim PH), Whitchurch (on request), Hardwick (on request)

Route 2: Kingswood, Grendon Underwood (all stops if required), Springhill (prison), Edgcott, Calvert (Green), Charndon (on request), Marsh Gibbon The Plough (on request), Ludgershall Village Hall (on request)

The buses will return to their depots in Aylesbury and so the bus company (Motts) have also indicated that they would be happy to drop students to a central point in Aylesbury, if required.

Both buses will leave school at 4.35pm, with the longest journey time taking approximately 45 minutes.



Out and About

We have been asked to advertise two opportunities for young people. These are not associated with Waddesdon, but may be of interest to you and your child(ren).



SATURDAY STEM CLUB (Bicester) is newly opening in January 2024! Our club, for 8-13 year olds, is dedicated to exploring the wonders of STEM through a variety of engaging activities that will spark your child's curiosity and ignite their passion for the subject. We believe that learning is best achieved through doing, and that's why, each week, we will complete activities that challenge their problem-solving skills, inspire their creativity, and deepen their understanding of the world around them. Find out more at <https://satstemclub.org/>

Saturday STEM Club is a new venture by The Engineering Trust. As a charity we champion engineering to young people, promote engineering as a career pathway and celebrate people in engineering.

Discover Bucks Museum in Aylesbury has a fascinating new exhibition opening on 21 October called **I Grew Up 80s**.

For those who remember the 80s the exhibition will be a nostalgia-filled time capsule of over 200 objects including toys, technology, fashion, films, music and even food, and for young people today the 80s still has an influence on their music, films and TV shows and the exhibition will give them a glimpse into the last decade before the digital revolution.



What to do if you're not happy about something

If you're not happy about something, please let us know and we will work with you to resolve the issue.

Our [Complaints Policy](#) outlines the steps you can take, but the simple message is to **get in touch with us**. If you send your concern to office@waddesdonschool.com, it will be directed to the right person.

You should expect to hear back in 48 hours, so if you have no reply by then, please ring the school office to check the progress on your complaint.

Even in moments of high emotion, we ask that you consider how best to convey your complaint. If the issue cannot be resolved by email or a phone conversation, then it is usually best to arrange a face-to-face meeting as lengthy email exchanges tend to become counter-productive.



Important Upcoming Events

w.b. 6th November – **Year 10 Languages Speaking Mock exams**

Tues, 7th November – **Report 1 issued**

Weds, 8th November – **Year 7 Form Tutors Evening with parents**

Thurs, 9th November – **Year 11 Pathways Conference (student event during the school day)**

16th-18th November – **Oliver!**

Thurs, 23rd November – **Year 12 Parents' Evening (in school)**

Weds, 6th December – **Start of Year 11 Mock Exams**

Thurs, 20th December – **Start of the Christmas holidays**



Congratulations to Year 13 student, Catherine Ahura, whose article for the National Gallery is featured in their [picture of the month feature](#).

Rubens's 'Roman Triumph'

Picture of the month October 2023

Student and Articulation alumna Catherine Ahura gives her personal response to Rubens's 'Roman Triumph'



Catherine Ahura



John 10:10: "The thief comes only to steal and kill and destroy; I have come that they may have life, and have it to the full."



Website:
www.waddesdonschool.com



Contact:
01296 651382



Email:
office@waddesdonschool.com