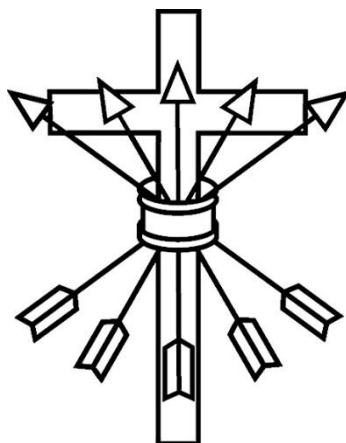


WADDESDON CHURCH OF ENGLAND SCHOOL



TRAVEL POLICY

STATUS OF POLICY:	School Policy
REVIEWED:	LMT
COMMITTEE RESPONSIBLE:	-
LMT APPROVAL:	16 January 2026
REVIEW DATE:	Spring Term 2029

Waddesdon CE School Travel Policy

As part of our desire to be healthy, treat the environment well, to reduce pollution and have a positive impact on global warming, we ask parents and staff to consider what they can do in support of the following policy.

This policy provides information on:

- Walking, scooting and cycling to school
- Information about the Waddesdon Greenway
- Our walking bubble
- Alternatives to parking in the side streets by using our Walk and Stride arrangements

The area around school can be particularly congested at the end of the school day, raising the risk of accidents to children and also disruption to local residents.

Individual thoughtfulness leads to collective benefit.

We actively encourage our pupils and staff to walk, scoot or cycle to school as this will:

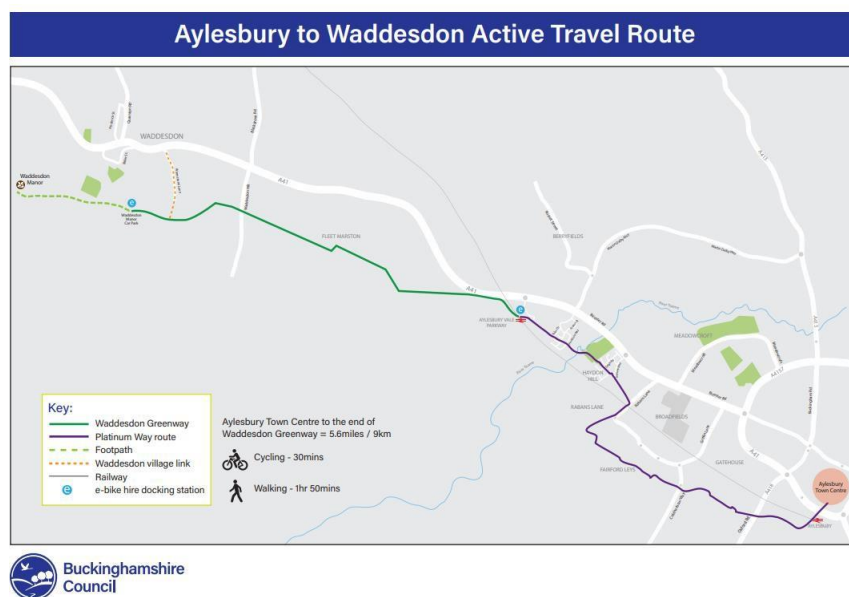
- keep us fit and healthy
- help our pupils develop road safety skills which will keep them safe as they travel further afield and more independently
- help keep our local air clean, and our streets free from congestion
- are life skills that everyone should be able to benefit from
- teach the value of being a responsible neighbour

What we ask of parents:

- Please encourage your child(ren) to walk, scoot or cycle to school whenever possible
- Ensure your child(ren) walk or ride sensibly and safely on the way to and from school, and to push bikes and scooters on school grounds
- Ensure that bicycles and scooters are roadworthy and properly maintained. If in doubt consult a qualified mechanic
- Consider providing your child(ren) with a cycle helmet
- Ensure your child(ren) can be seen by fitting lights to their bike by supplying them with high- visibility clothing

- Make sure your child(ren) has a lock for their bike or scooter and that they know how to use it
- Ensure you have appropriate insurance cover for your child(ren)'s bicycle or scooter as the school is not liable for any loss or damage to cycles or scooters on the premises or being used on the way to or from school
- If you travel by bus, can you get off the bus at least two stops early and walk the last part of the journey?

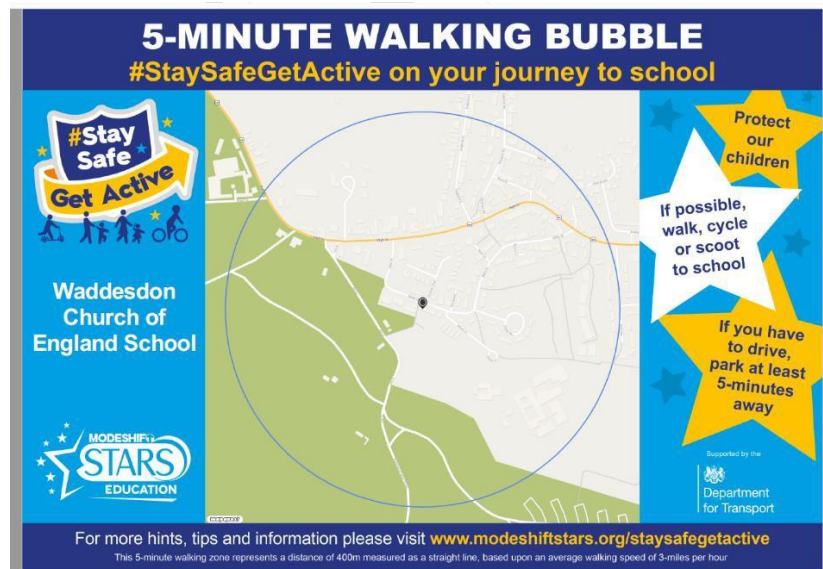
The newly opened Platinum Way, or Waddesdon Greenway, provides a wonderful approach route to the school from the east.



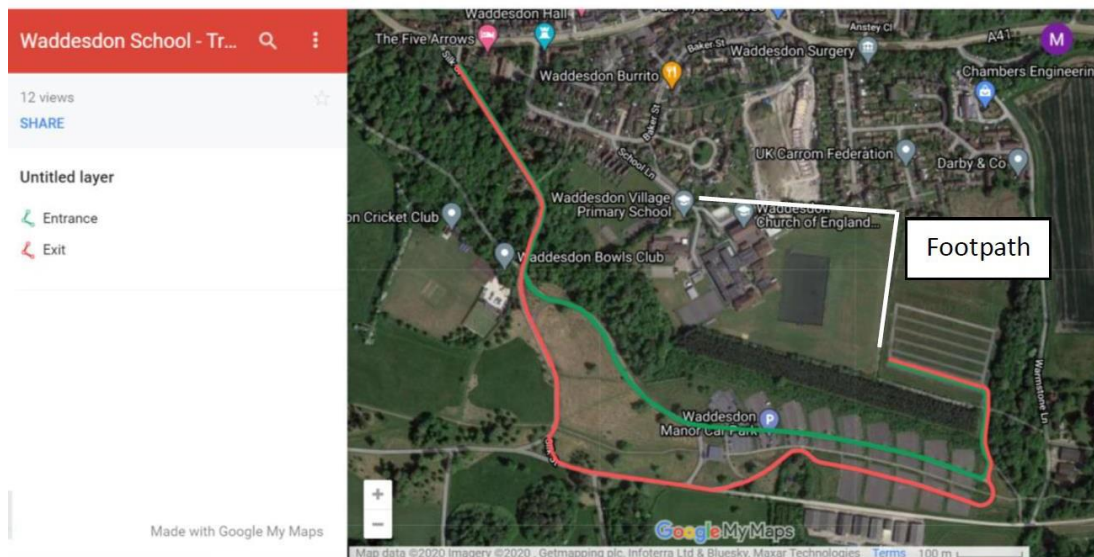
What if I have not option but to drive my child or myself to school?

We understand that sometimes there is no alternative to driving to school.

- Where a car must be used, we ask parents to drive only part of the way, and drop their child(ren) off away from the school so that some of the journey can be walked or scooted:
 - We have a 5-10 minute walk zone outside of which we ask parents to park:



- We also have a park & stride site at *Waddesdon Manor*:



- If you do have to drive your child(ren) and stop in the near vicinity please do so legally, safely and with respect for our neighbours and local residents
 - It is not acceptable to park or wait on double yellow lines, on the school zigzags or across residential driveways for any period of time.

What we ask of pupils

- Ask your parents if you can walk, scoot or cycle to school
- Behave in a way that shows you and the school in the best light whether walking, scooting, cycling or using public transport

- Ride or walk courteously, sensibly and safely on the way to and from school
- Push bikes and scooters on school grounds
- Check that your bike or scooter is roadworthy and properly maintained
- Consider wearing a cycle helmet
- Make sure you can be seen by using lights in the dark or bad weather and by wearing high- visibility clothing
- Make sure you have a lock for your bike or scooter and that you use it

Please note that the decision on whether a child is competent to cycle or scoot to school is for the parent(s) or carer(s) to make. The school has no liability for any consequences arising from this decision.

What we do

- We use Modeshift STARS to update and monitor our school travel plan
- We promote safe and active travel as much as possible by using our noticeboard, displays, newsletter and website at www.waddesdonschool.com
- We encourage all members of our school community to walk, cycle or travel by public transport for the journey to school. To support this we provide:
 - Cycle parking
 - Scooter parking
 - Lockers for helmets/equipment
 - Public transport information
- Local school trips are made by public transport where possible, or on foot if the destination is close by
- We let all new pupils and their parents/carers know that we promote healthy and sustainable travel to school before the child starts at our school

Travel to and from school on public transport, or dedicated school services

Bus behaviour and anti-bullying policy

We expect students to maintain our standards for behaviour while using the bus service. While in school uniform, they are still representing the school and are subject to our school standards of behaviour.

Any form of unacceptable behaviour, including bullying, should be reported by students, or parents, so that it can be dealt with in a similar way were that behaviour to happen in school.

Where bullying or anti-social behaviour continues, there have been circumstances which have led to the removal of a student from the service for a period of time.